

How to Install a Network-Licensed Version of PASW Statistics 18

Important:

- ❖ PASW Statistics 18 requires either Windows XP Professional or Apple MAC OS 10.x. It is not compatible with Windows 95 or Windows 98.
- ❖ PASW Statistics 18 installs from a DVD and your PC must have a working DVD-ROM drive. You may obtain a DVD from ITS (718-951-4357).
- ❖ The network-licensed version of PASW Statistics 18 allows many users to share a pool of PASW Statistics 18 licenses. When PASW Statistics 18 is installed or run, the software connects to a special licensing server, which verifies that a license is available for your use. When you exit PASW Statistics 18, that license is returned to the pool for others to use. Currently only PCs can use Network-licensed PASW Statistics 18 sessions. MACs that cannot emulate a Windows PC require a special standalone license.
- ❖ While installing or using PASW Statistics 18 from off-campus, you must have an active network connection to the Internet, and you must first establish a VPN session with the college network. A VPN session (Virtual Private Network) allows your PC to bypass the college firewall to reach servers that are normally accessible only on campus. The VPN session also encrypts your communications to ensure your privacy. Since your session bypasses the college firewall, please use VPN only while you are accessing college systems and make sure that your PC is well protected against viruses and spyware. The VPN takes a few minutes to set up, but once it is configured on your PC, it can be launched easily by clicking on a special desktop icon.
- ❖ If you are installing PASW Statistics 18 on campus, please proceed to page 10 of these instructions, since you do not need a VPN setup.
- ❖ If you have any questions or problems setting up VPN or PASW Statistics 18, please contact ITS Network Support at 718-677- 6180, or Netgroup@brooklyn.cuny.edu.

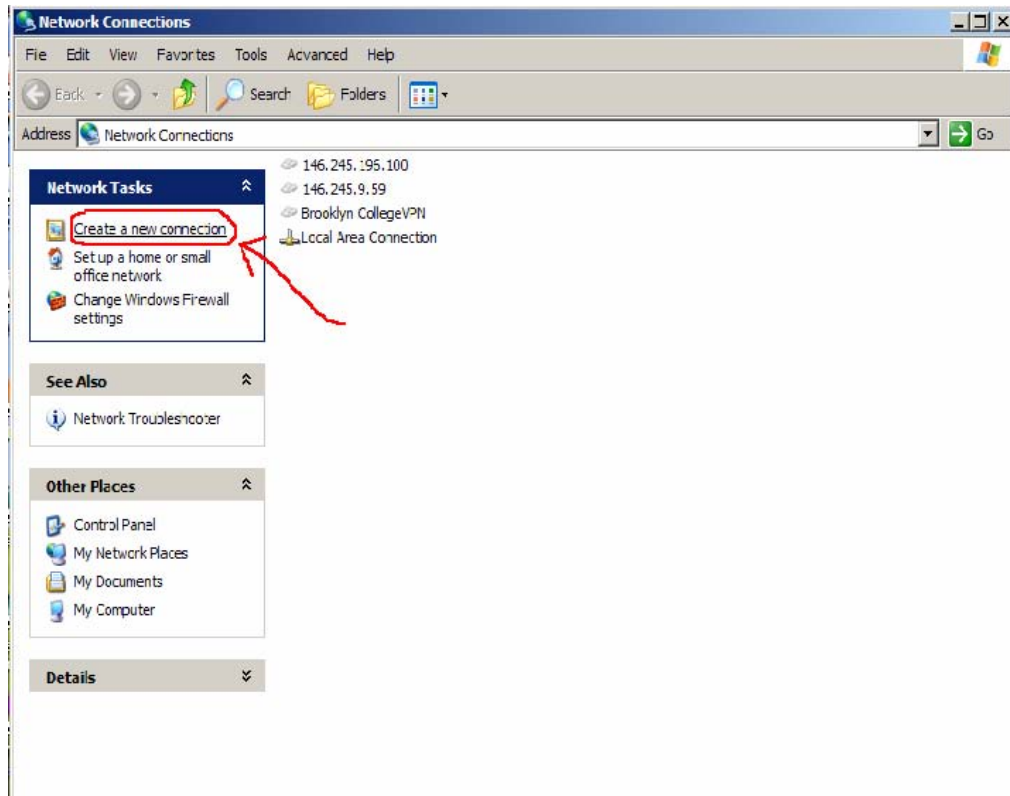
SETTING UP VPN ON YOUR XP PROFESSIONAL PC

1. Go to the Start Menu and Choose Settings, then choose Network Connections and double click. (Do Not Choose one of your existing Network Connections, Click the word Network Connections.)



If your Start Menu looks different from above. Go to the Start Menu, Choose Connect to, and then click Show All Connections. On the left hand side of the window you will then choose create a New Connection .

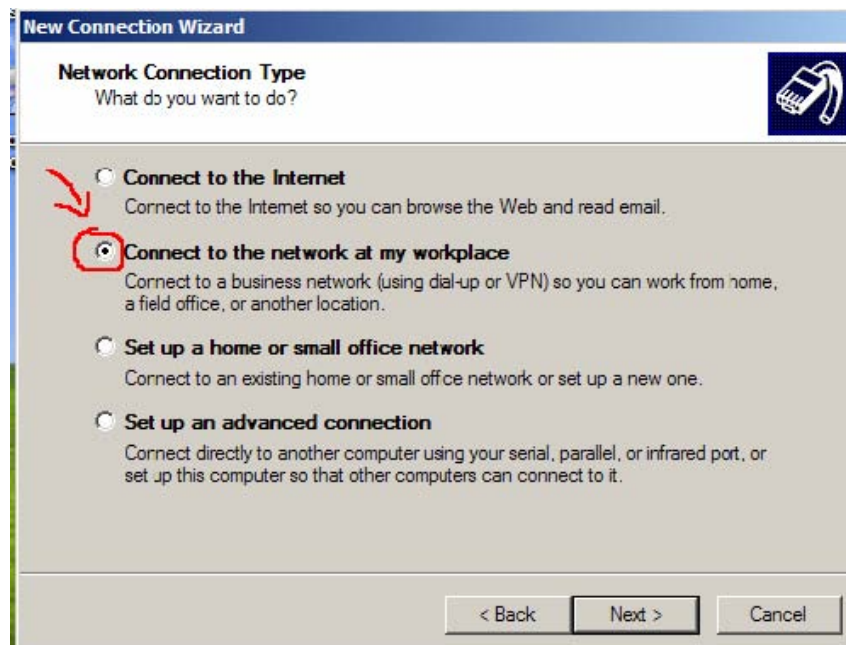
2. You will then see the screen below. Click on “Create a New Connection”.



3. Click Next.



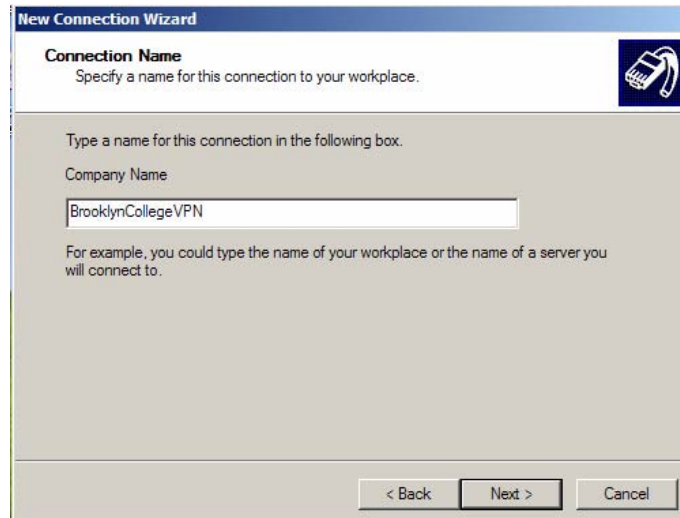
4. Choose the second radio Button option and click Next.



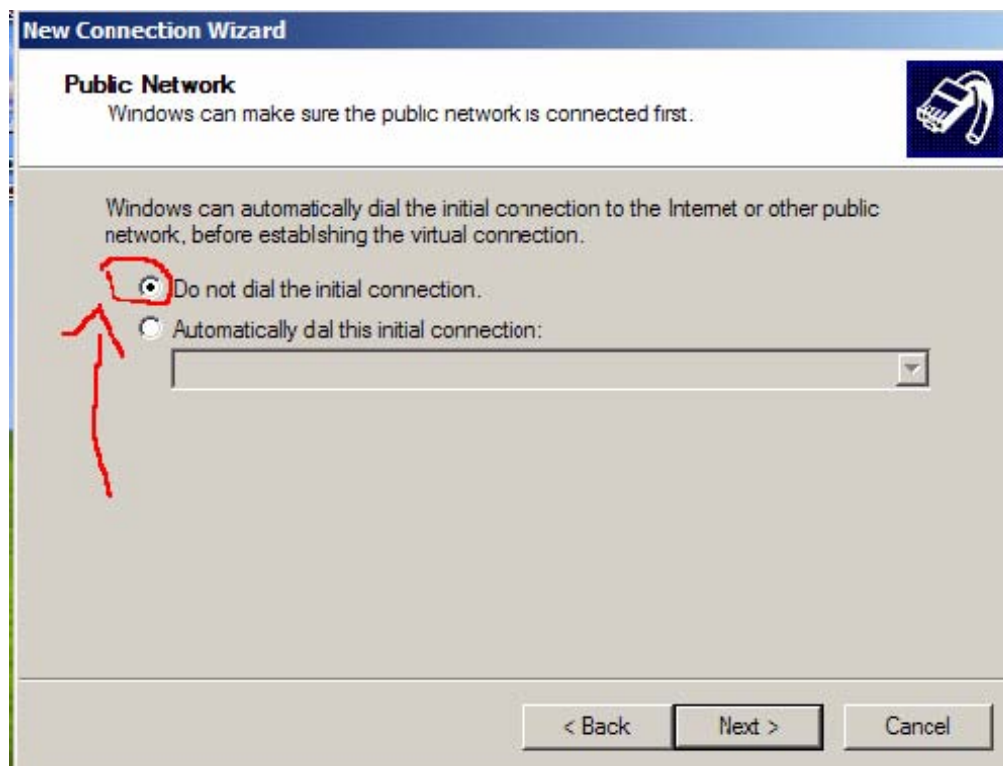
5. Choose the second option. Click Next.



6. In the textbox you will type the name you would like to use to identify the VPN connection. For Example: BCVPN. Click Next.




7. Select the first option. "Do not dial the initial connection". Then Click Next.



This Step May not be Shown, depending on your Settings. You may proceed to the next step.

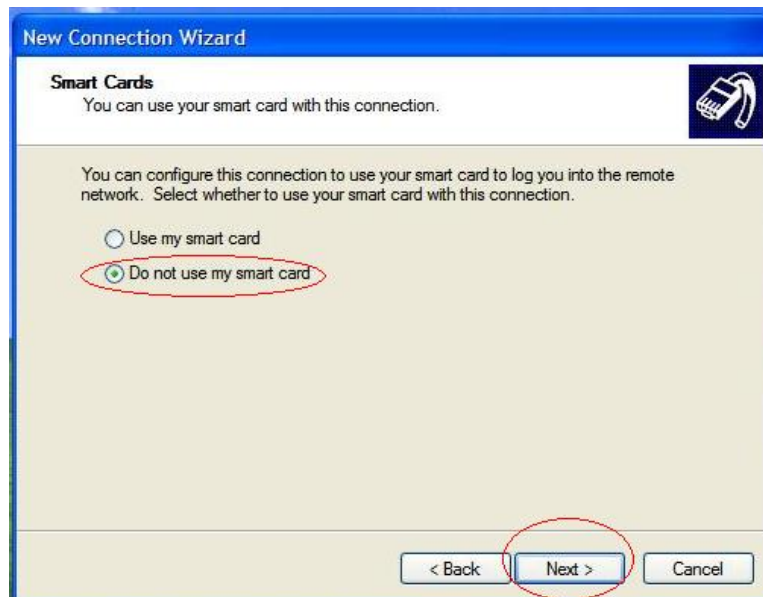
8. Type the following IP address for the BC Virtual Private Network:
146.245.9.59

Then Click Next.



The screenshot shows the 'New Connection Wizard' dialog box. The title bar reads 'New Connection Wizard'. The main heading is 'Connection Name' with a sub-instruction: 'Specify a name for this connection to your workplace.' Below this, there is a text box containing the IP address '146.245.9.59'. A note below the text box says: 'Type a name for this connection in the following box. Company Name' and 'For example, you could type the name of your workplace or the name of a server you will connect to.' At the bottom, there are three buttons: '< Back', 'Next >', and 'Cancel'.

If you have a smart card installed on your pc, you will be prompted to use it. Select do not use my smart card and then click next.



The screenshot shows the 'New Connection Wizard' dialog box at the 'Smart Cards' step. The title bar reads 'New Connection Wizard'. The main heading is 'Smart Cards' with a sub-instruction: 'You can use your smart card with this connection.' Below this, there is a text box containing the text: 'You can configure this connection to use your smart card to log you into the remote network. Select whether to use your smart card with this connection.' There are two radio button options: 'Use my smart card' and 'Do not use my smart card'. The 'Do not use my smart card' option is selected and circled in red. At the bottom, there are three buttons: '< Back', 'Next >', and 'Cancel'. The 'Next >' button is also circled in red.

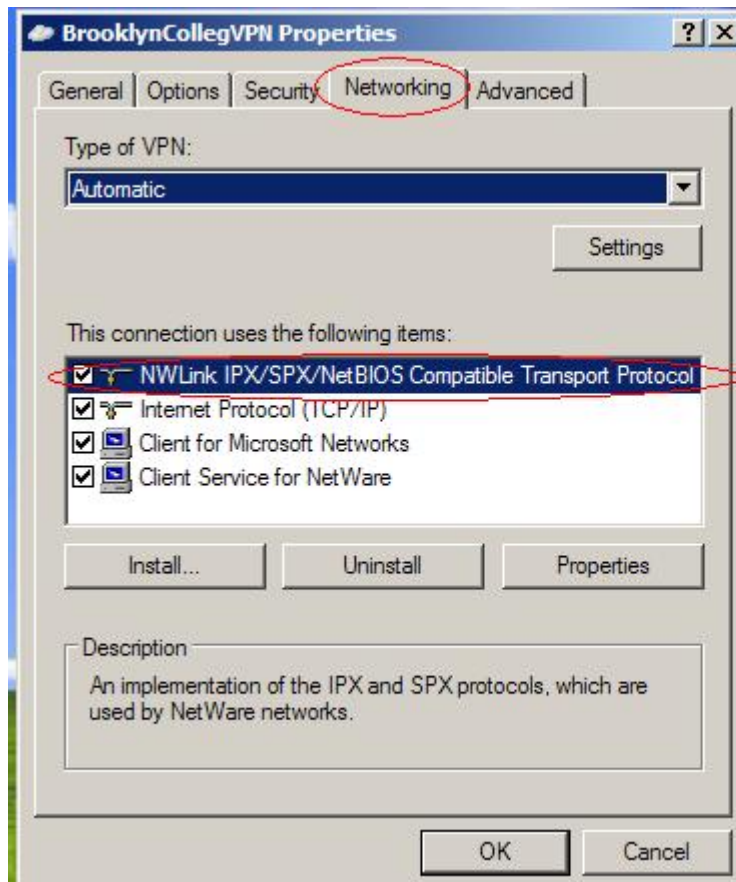
9. If you would like a shortcut to the VPN on your desktop. Click the checkbox to create the shortcut (As Indicated Below). Then Click Finish.



10. You will then be prompted for your user name and password. BEFORE entering your username and password, first choose Properties.



11. Select the Networking tab and Uncheck the Checkbox that contains IPX/SPX. Then Click Ok.



12. You can then enter your Username and Password. VPN authentication uses the same credentials as your BC email. If the PC is secure, you may check off “save the user name..” so that future connections will not require that you re-enter the Id and password. Click CONNECT to establish the VPN session.

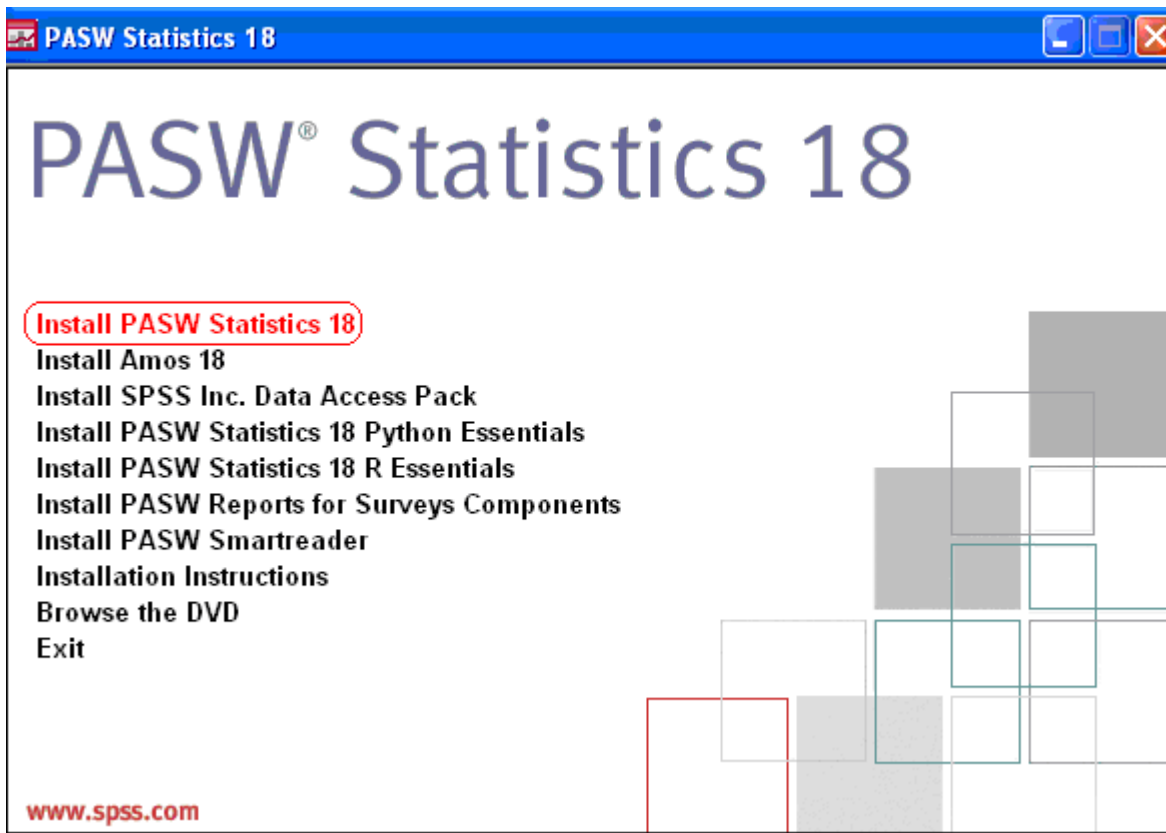


13. Make sure you have established a VPN session (look for the indicator on the right side of your Windows Task bar that looks like two computers connected by a lightning bolt). PASW Statistics 18 can now be installed using the instructions below.

INSTALLING PASW STATISTICS 18

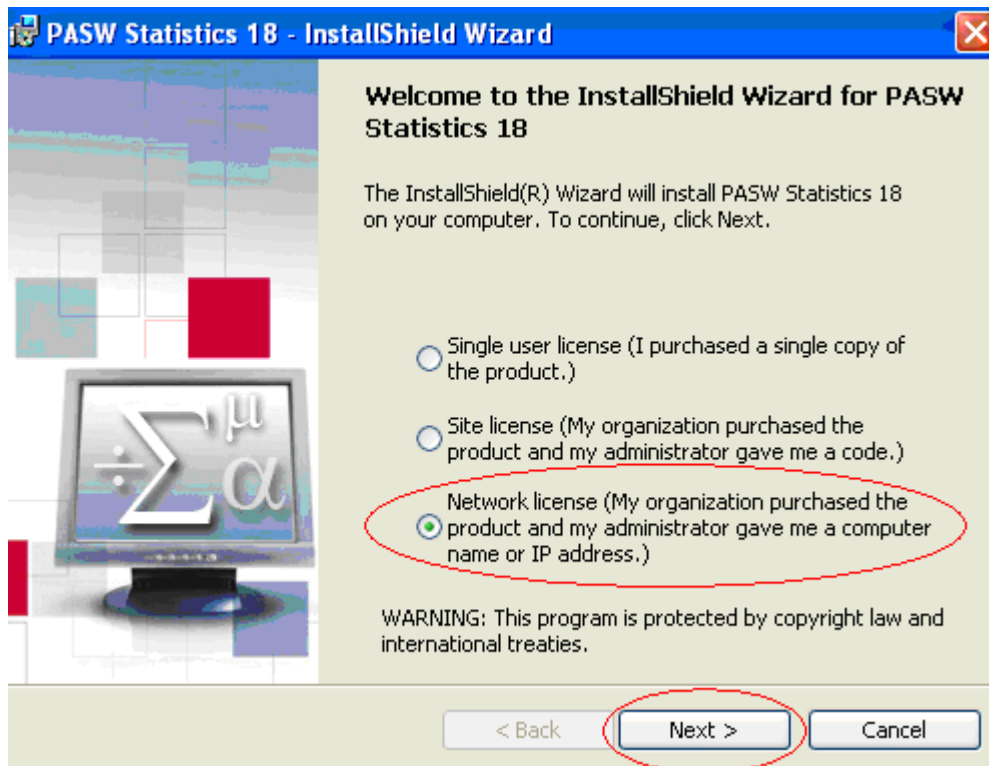
1. Make sure that you have established a BC VPN session successfully.
2. Insert the PASW Statistics 18 Installation Disk into the DVD-ROM Drive.
3. You will then be prompted with the screen below.

Choose the first Option to Install PASW Statistics 18.



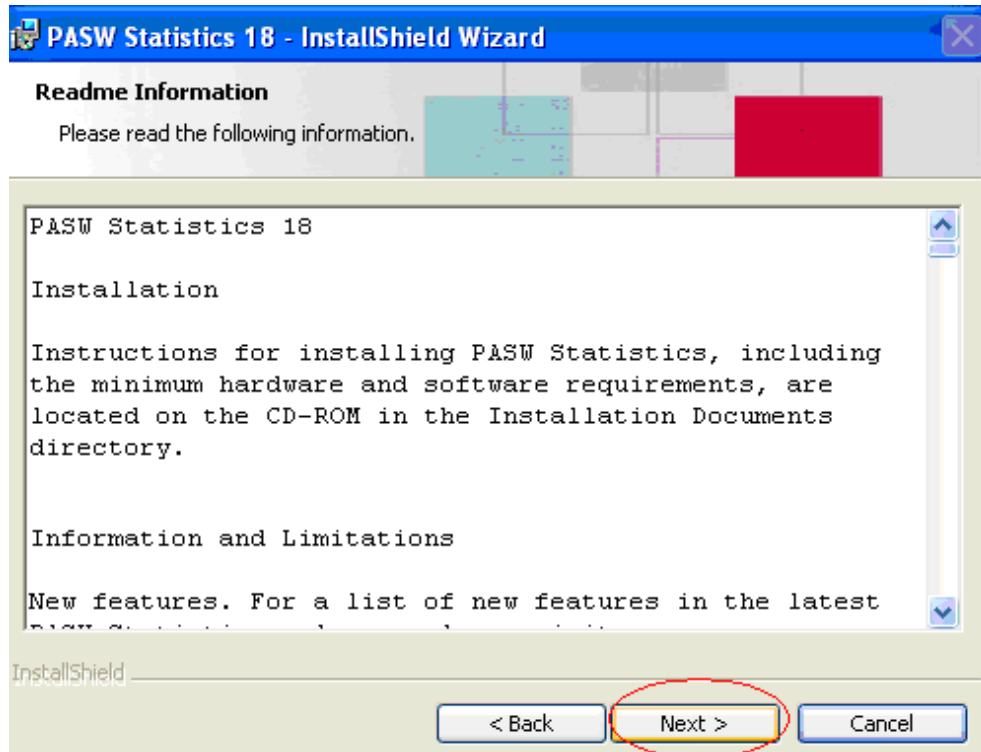
If this screen doesn't appear automatically, then open the DVD to run the setup.

4. Windows will then prepare PASW Statistics 18 to be installed on your pc. You will then see the following screen.

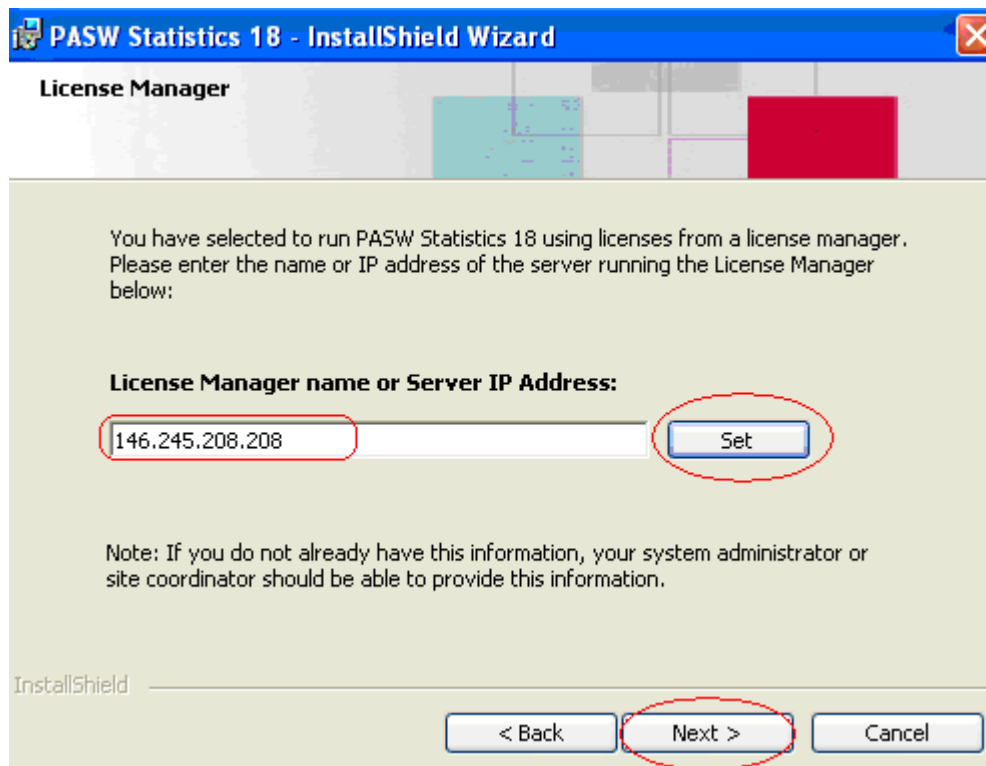


Choose the third option (Network License) and Click Next.

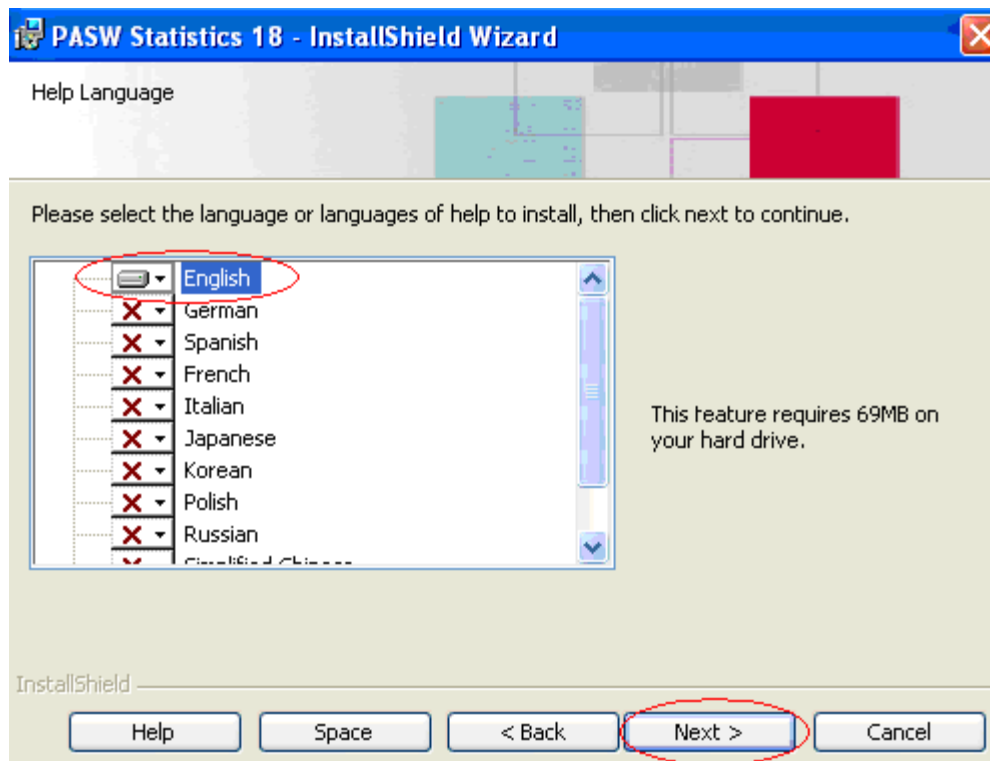
5. Read the Readme File and then click Next.



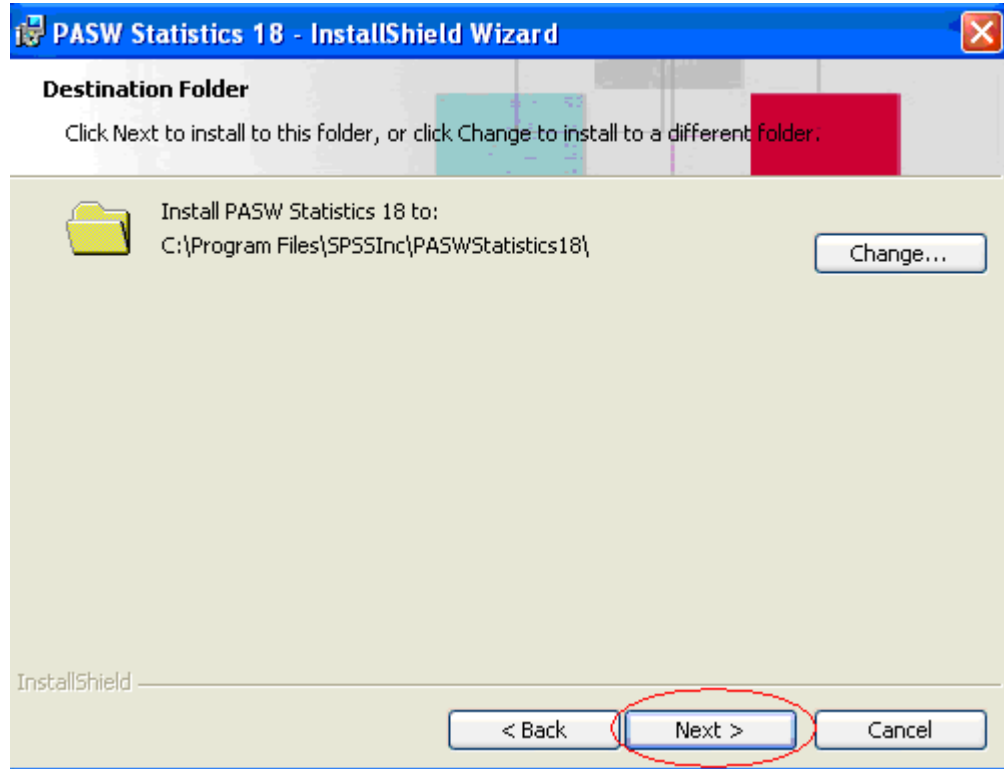
6. Enter the IP address of the License manager as follows: **146.245.208.208**.
Click **Set** and then Click **Next**.



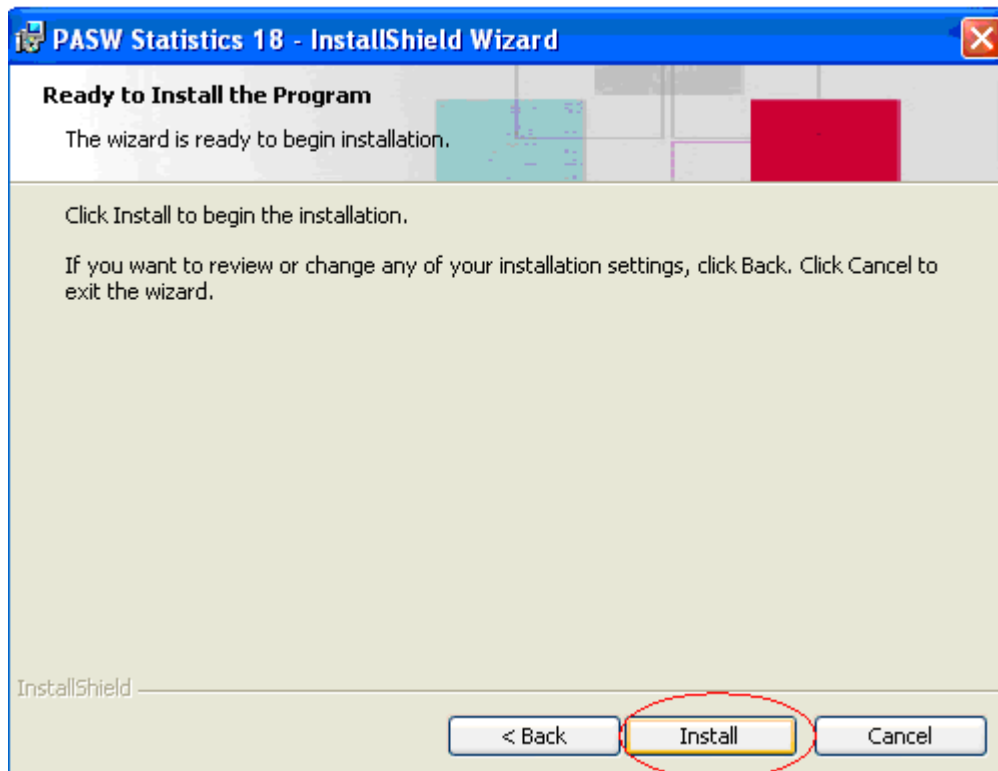
7. Select the language or languages and click Next to continue.



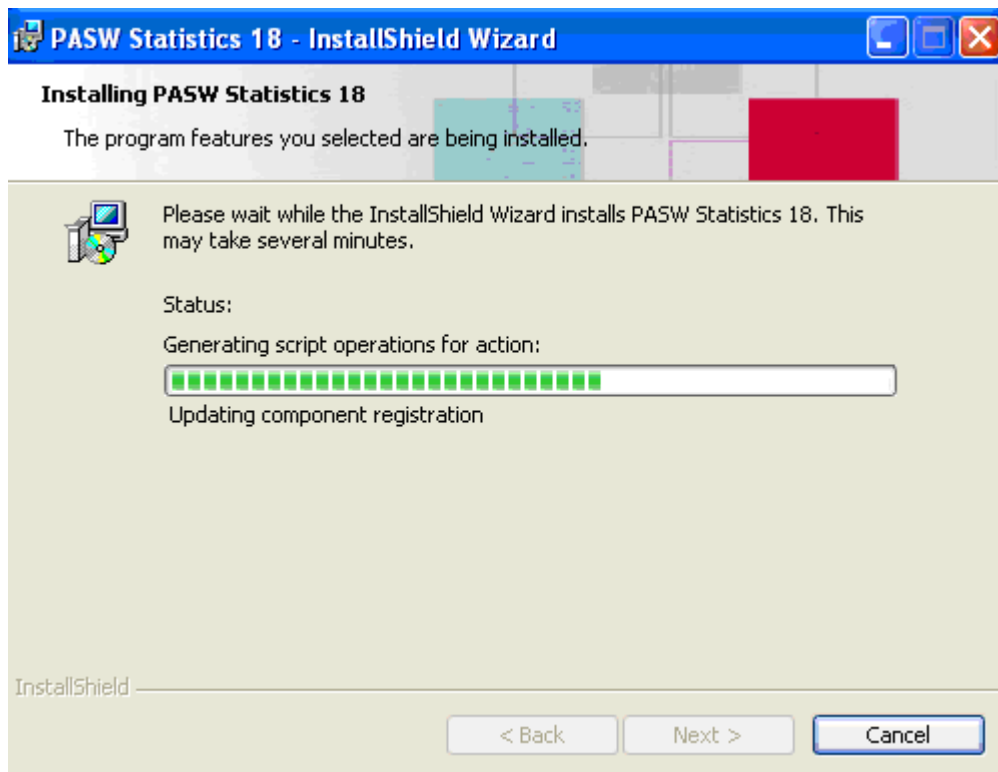
8. **Click Next to install the Program to your Computer in the default folder.**



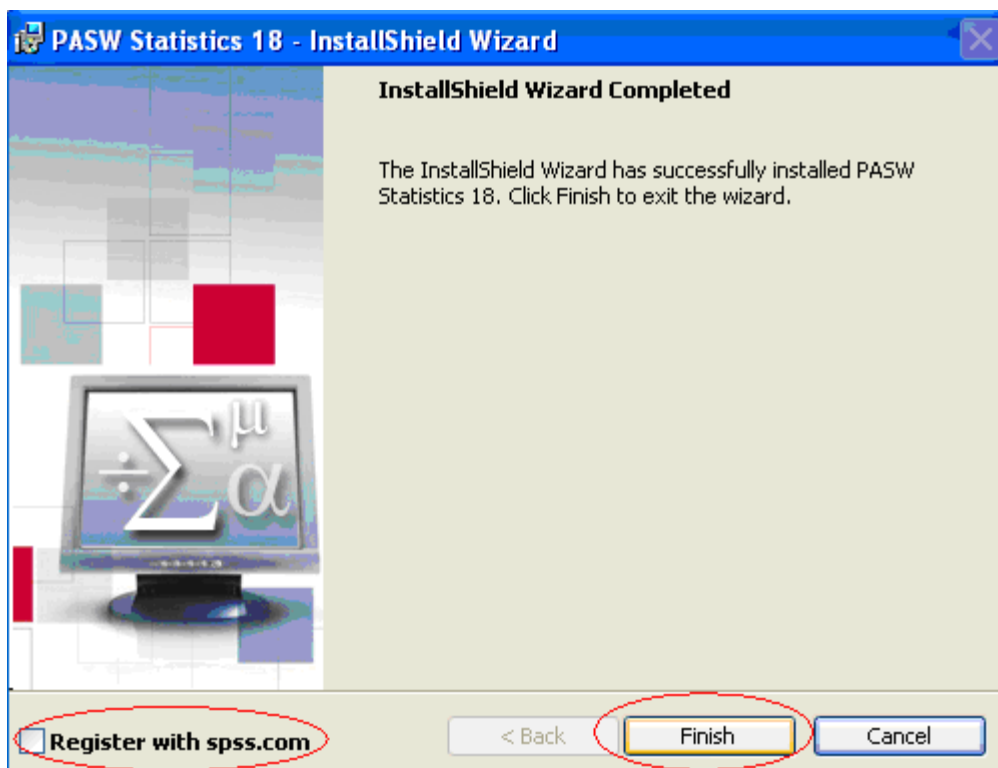
9. **Click Install.**



10. PASW Statistics 18 will then install itself onto your computer. It will take a few minutes for it to complete.



11. When the installation is completed, you will see the following screen.



Uncheck Register with spss.com then click Finish.

12. You have finished installing PASW Statistics 18. It is now ready to be used.

13. Remember! If you are accessing PASW Statistics 18 from off campus, you must have an active Internet connection, and you must initiate a VPN session to the college network (see instruction above). After you are done using PASW Statistics 18, please disconnect your VPN session by right-clicking on the VPN icon on your Windows taskbar and choosing DISCONNECT.