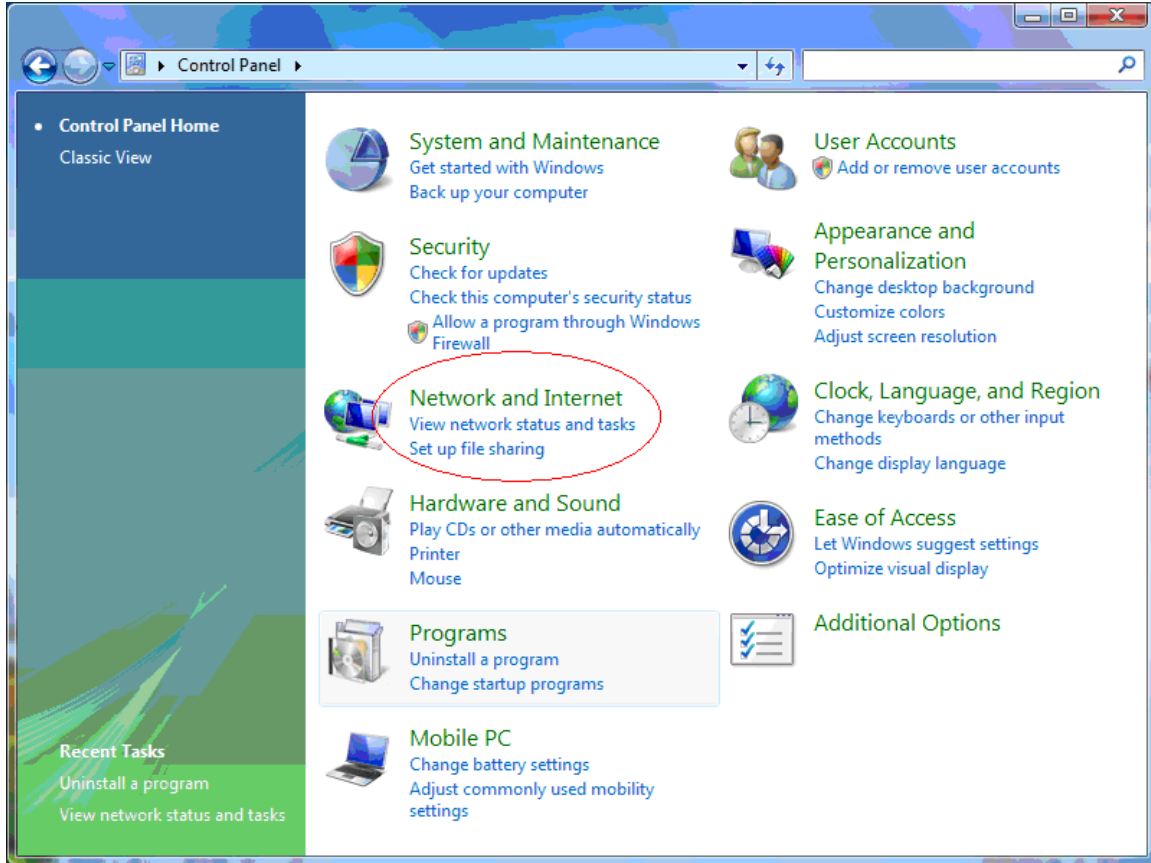
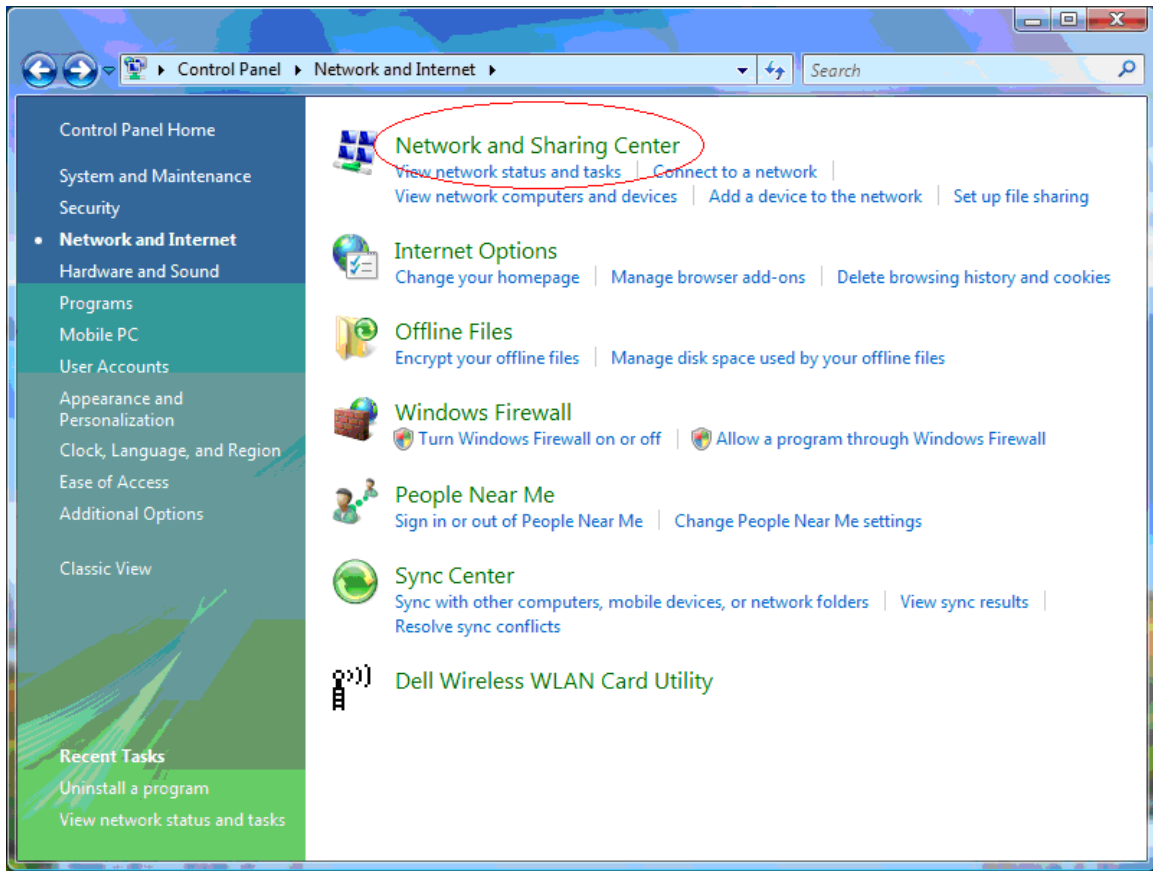


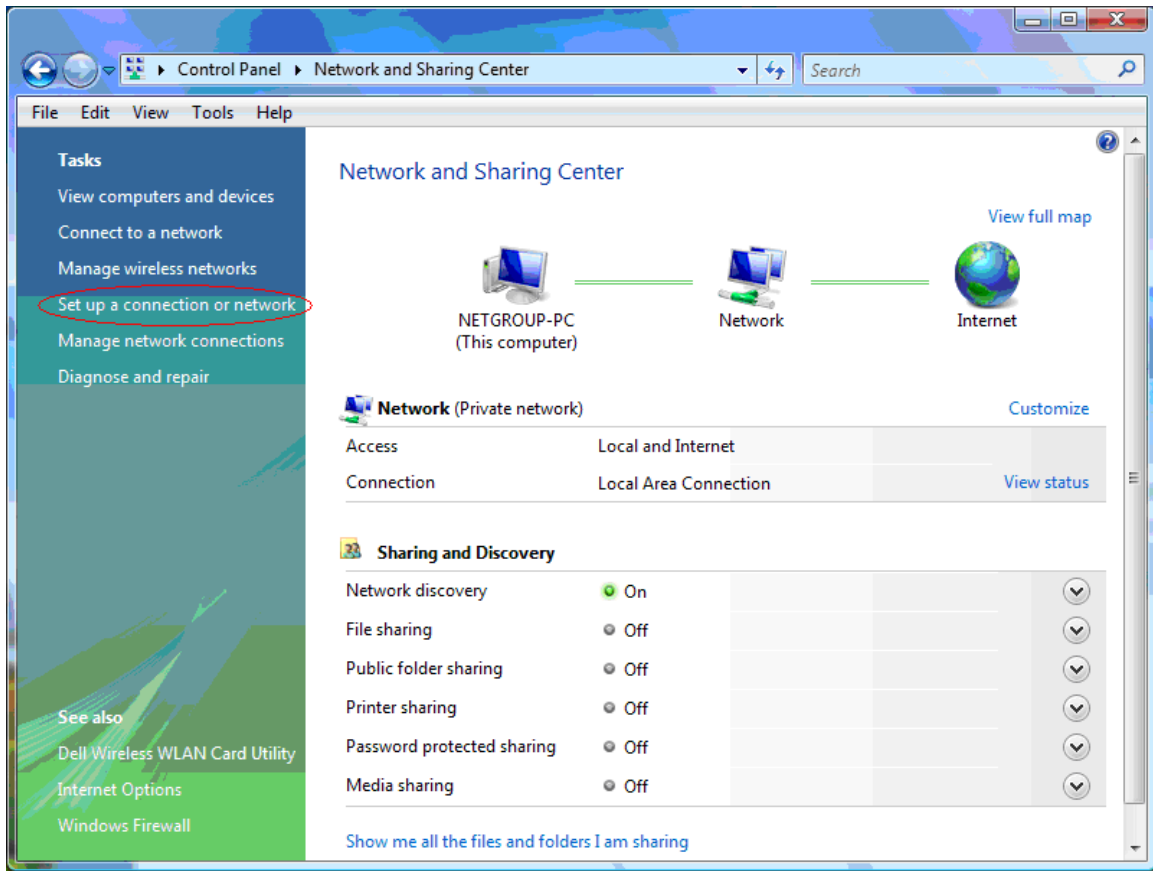
1. Go to Start, Settings, Control Panel, click on Network and Internet



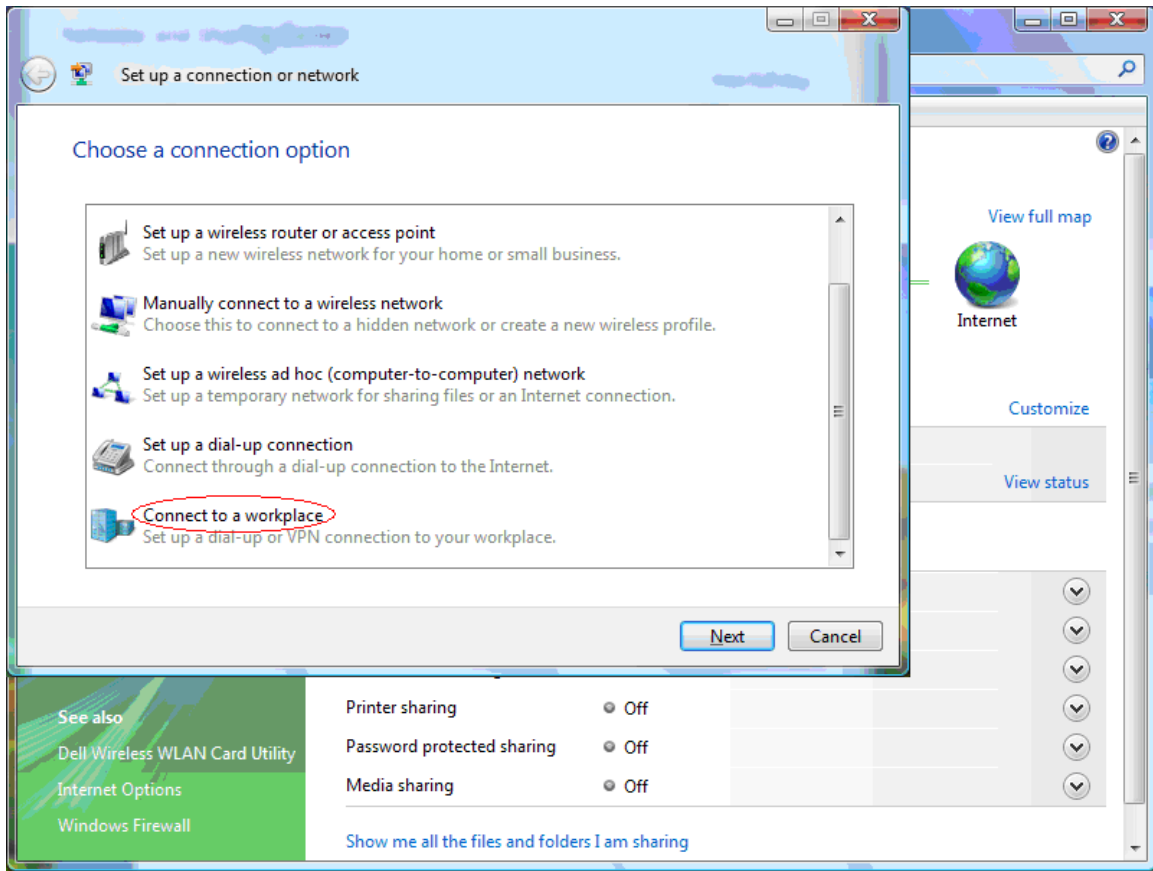
2. Click on Network and Sharing Center



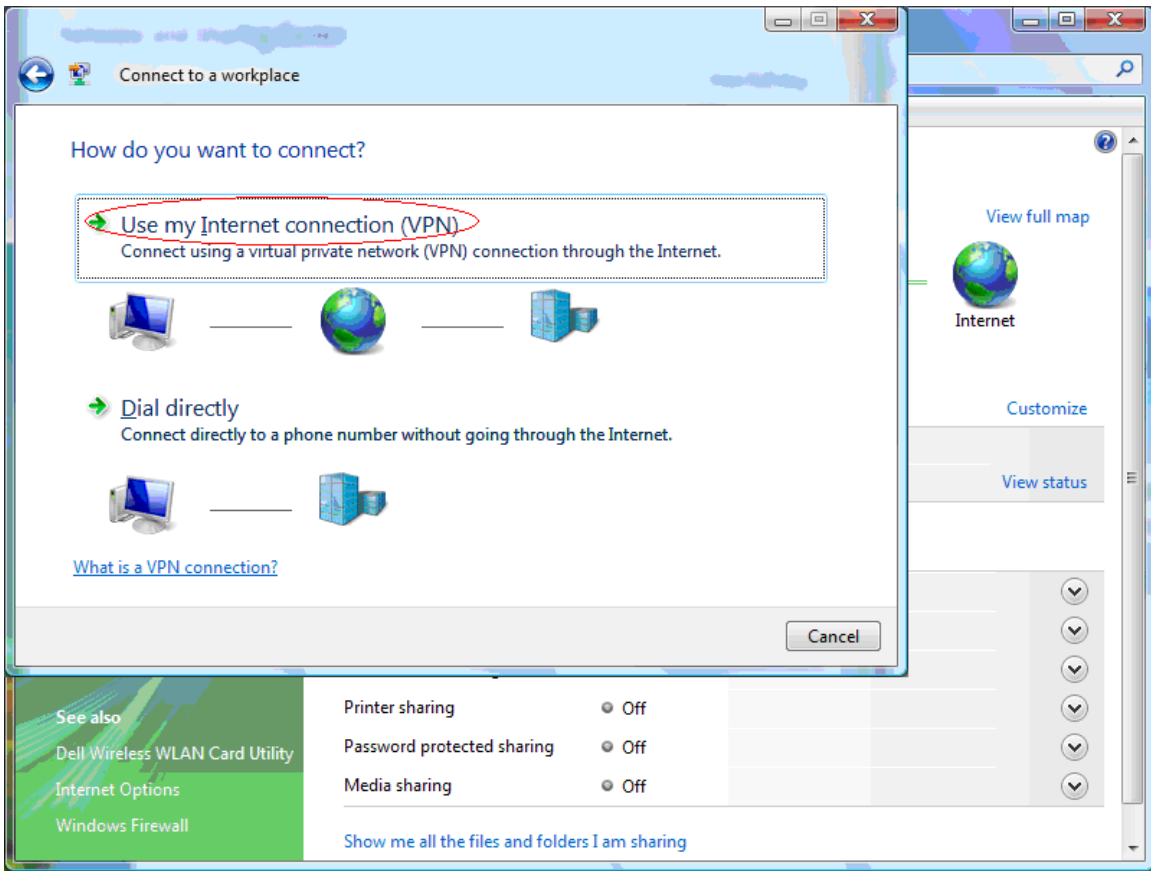
3. Click on Set up a connection or network



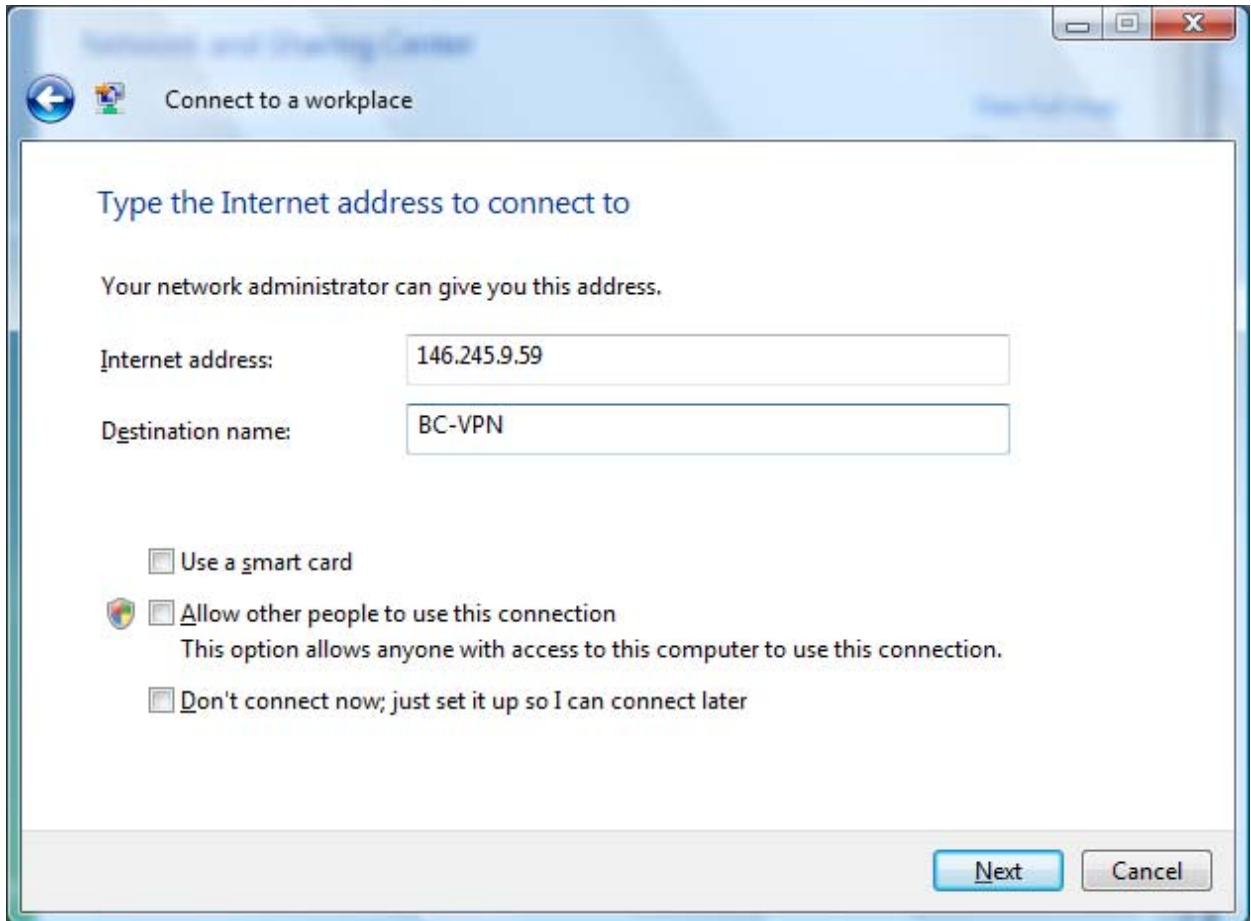
4. Select Connect to a workplace, click on Next.



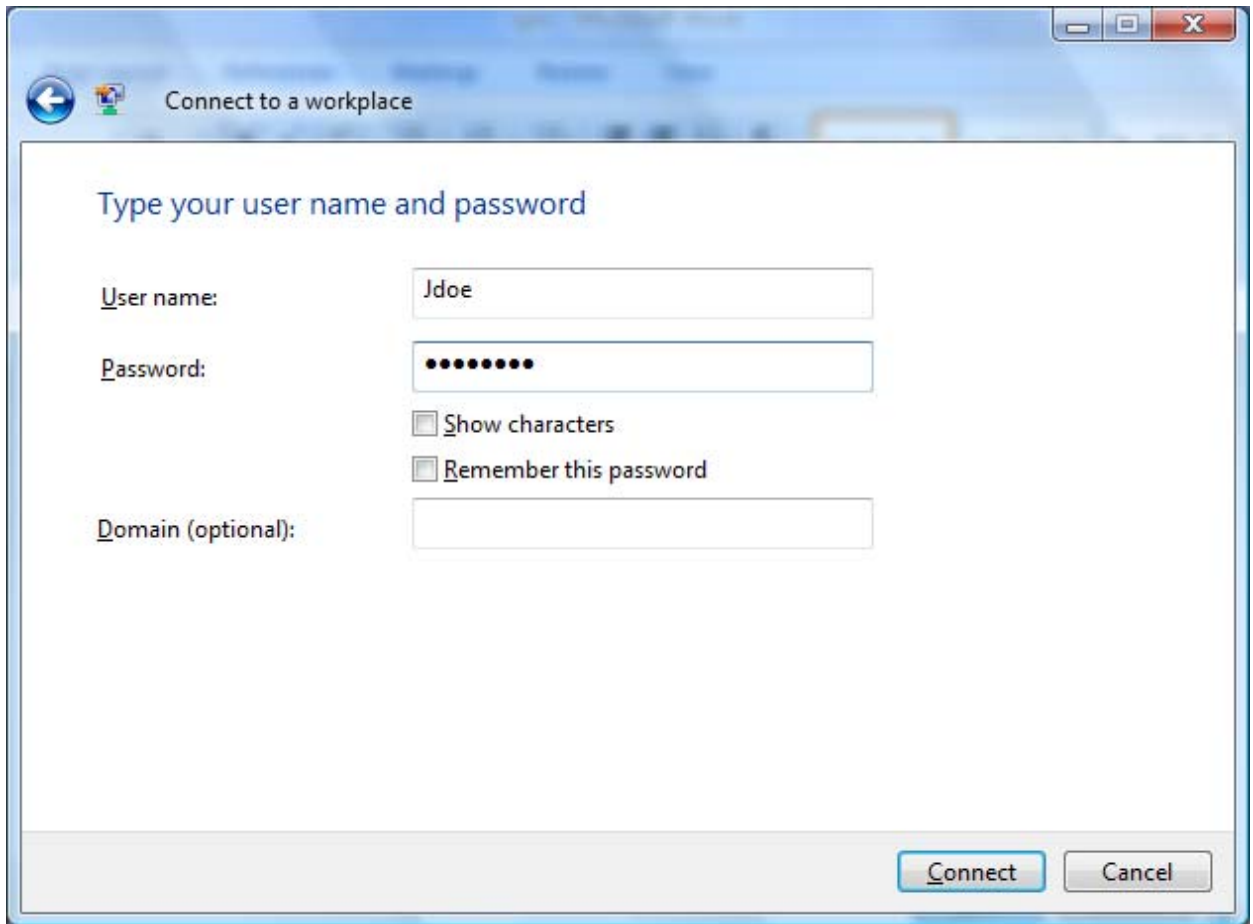
5 . Click on Use my Internet connection (VPN)



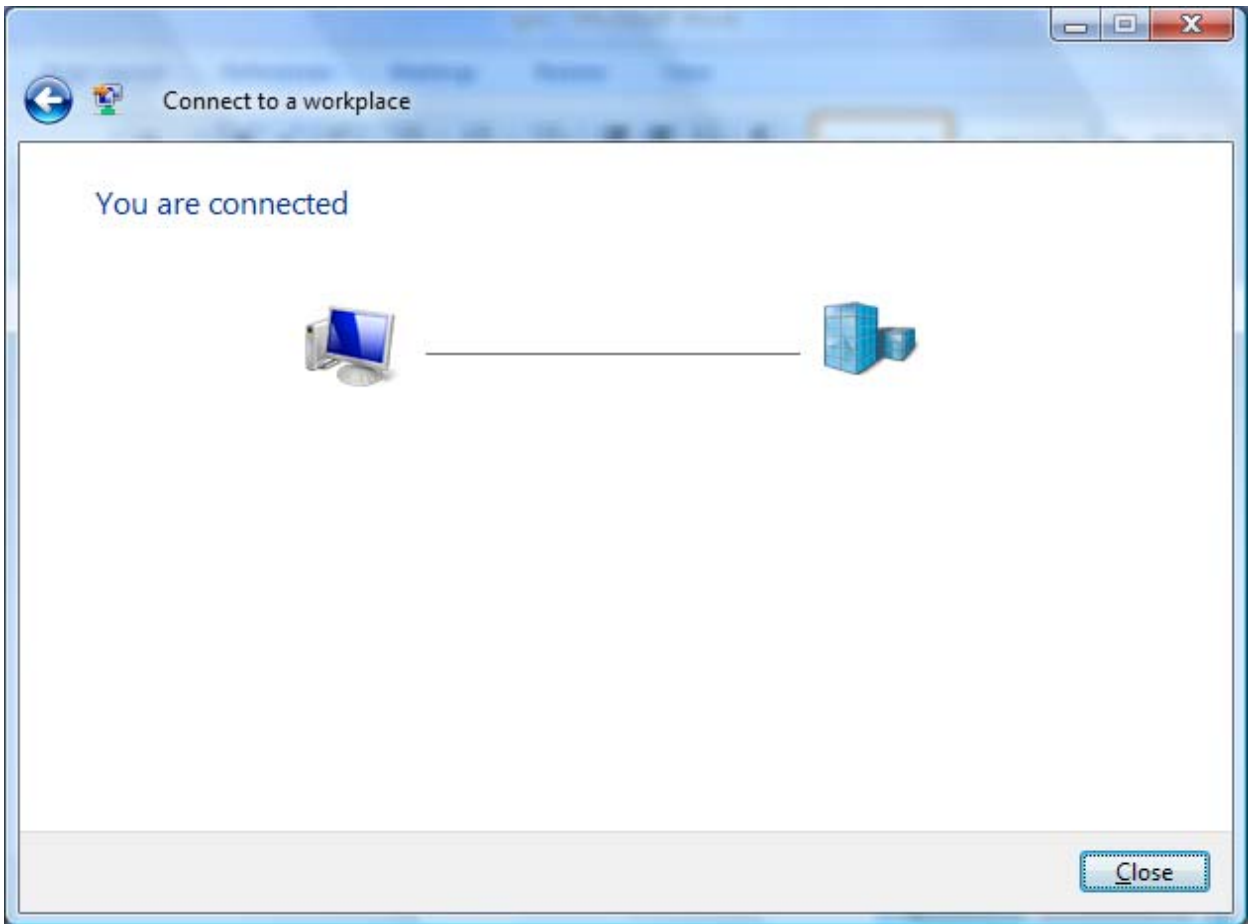
6. Enter **146.245.9.59** as the internet address and **BC- VPN** for the destination name.



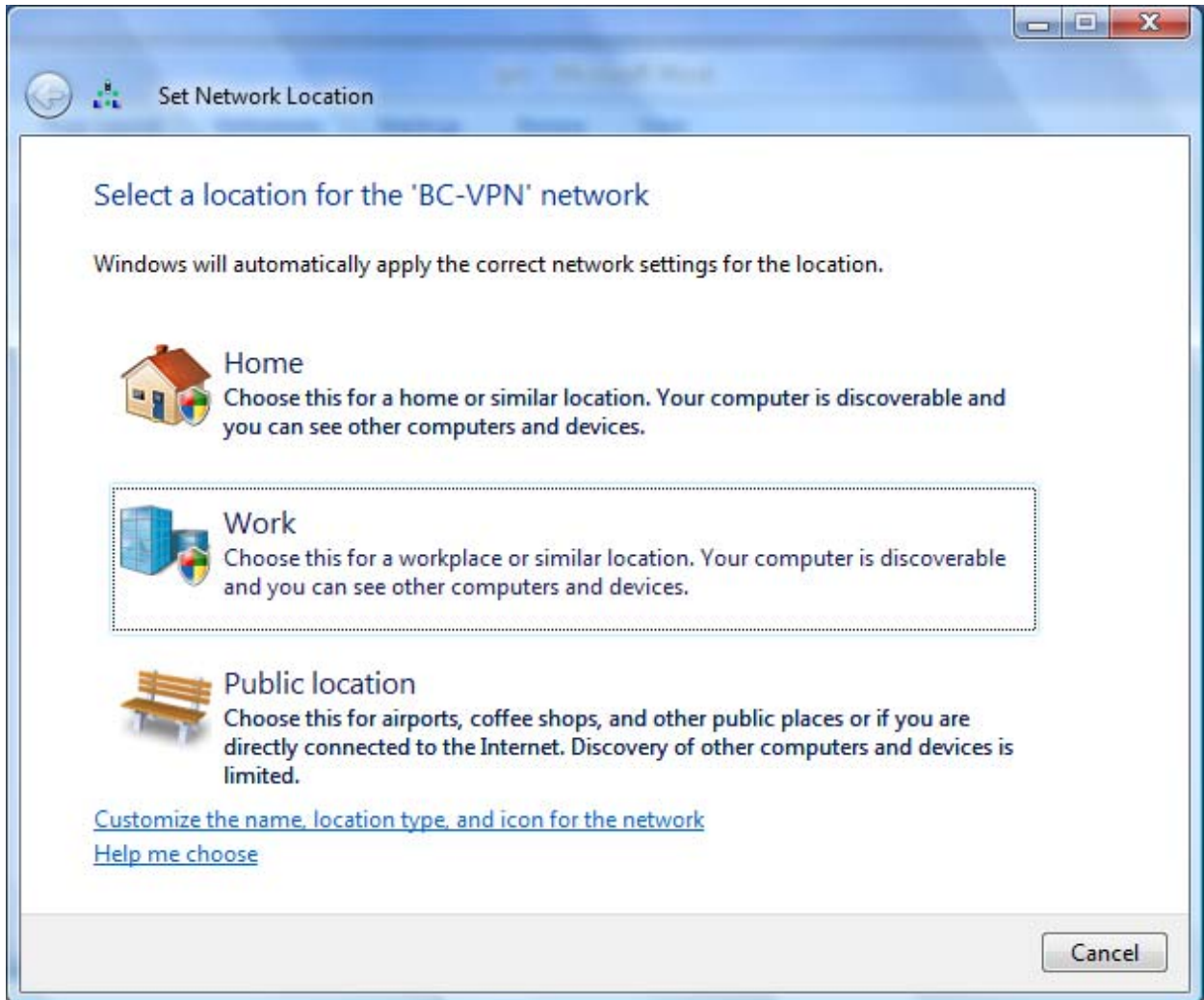
7. Put in your BC Username and Password, Click on Connect.



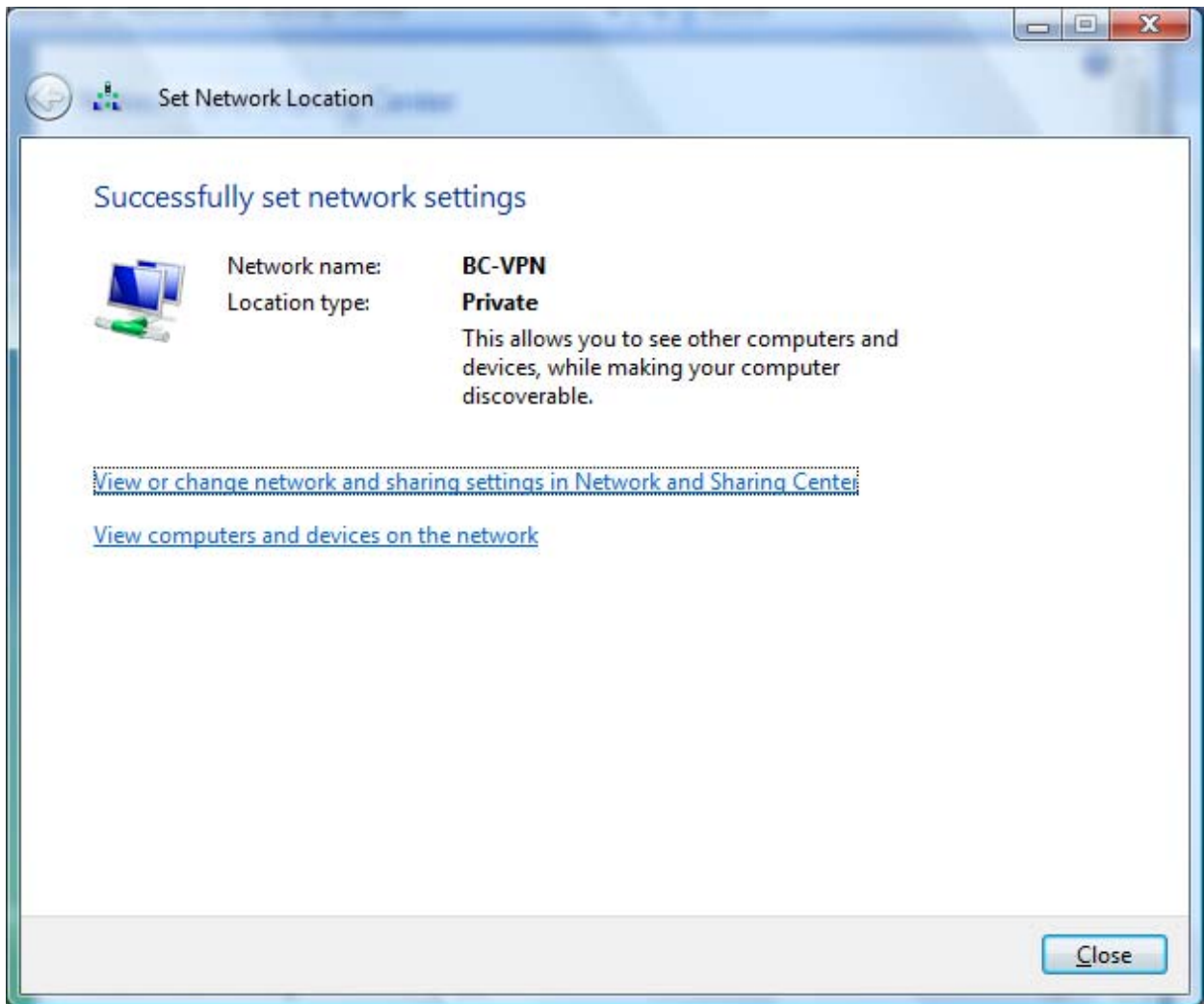
8. You will see if you are successfully connected.



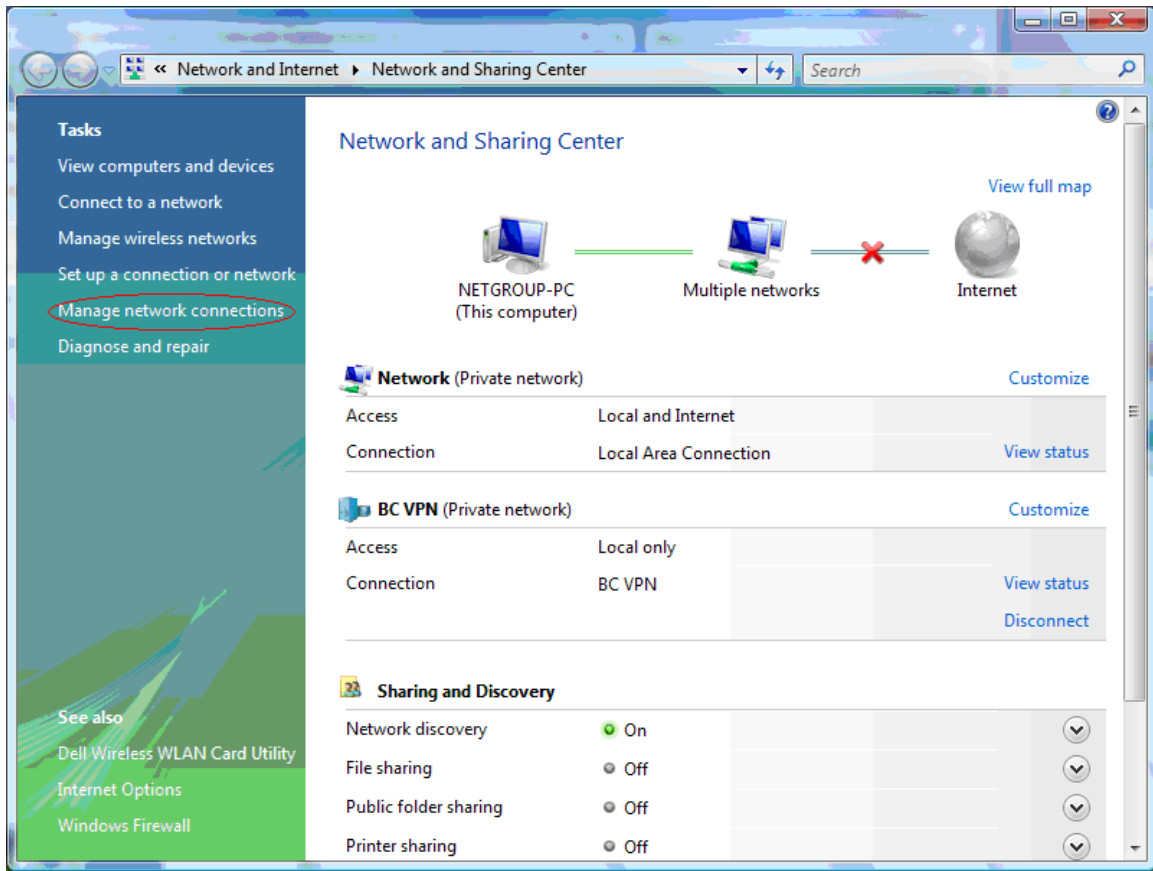
9. Select a location for the BC-VPN network. Click on Work.



10. You will see the following screen. “Successfully set network settings”



10. You may put a shortcut on Desktop
Go to Network and Sharing Center, click on Manage Network Connections



11. Drag the BC-VPN icon and drop it on the Desktop

